

Protocol on the Increase or Introduction of Compulsory Non-tuition Related Fees



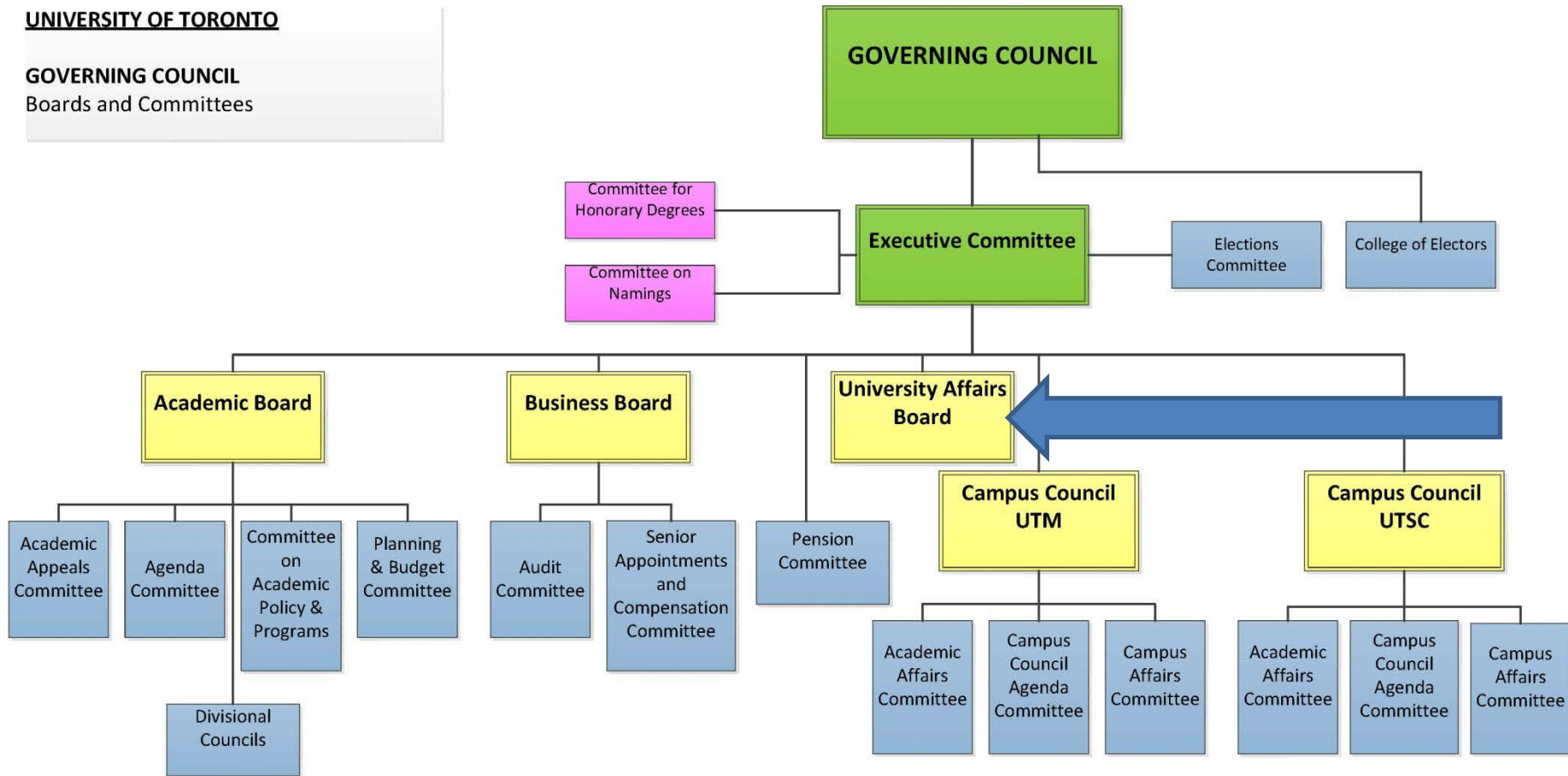
Governance Policies

- Policy for Compulsory Non-Academic Incidental Fees
 - regulates the compulsory non-academic incidental fees in the campus services and student societies areas for which the *University Affairs Board* has responsibility: Athletics, Hart House, Student Life and various campus-wide and divisional student societies.
- Memorandum of Agreement between The University of Toronto, The Students' Administrative Council, The Graduate Students' Union and The Association of Part-time Undergraduate Students for a Long-Term Protocol on the Increase or Introduction of Compulsory Non-tuition Related Fees (*the Protocol*)
 - authority of COSS is found within the provisions of the Protocol

University Governance

UNIVERSITY OF TORONTO

GOVERNING COUNCIL
Boards and Committees



Authority of COSS

- The authority of COSS is founded within the provisions of the *Protocol* on non-tuition fees.
- The *Protocol* sets out the terms and conditions regarding **increases to, and the establishment of, compulsory non-academic incidental fees.**
- COSS provides its advice on such fees to the Governing Council.
- COSS is accountable to, and must meet the timelines of, the Governing Council.

COSS Membership

COSS consists of **seventeen** voting members:

- the President of the University or his delegate
- two part-time undergraduate students, appointed by APUS
- two graduate students, appointed by the Graduate Students' Union
- four full-time undergraduate students appointed by UTSU
- one full-time or part-time student, chosen by QSS
- one full-time or part time student, chosen by the CSS
- six other persons appointed by the President of the University

Voting members: 10 students/7 Presidential appointees

Quorum: 11 members of which 6 shall be students

COSS has a non voting Chair that is appointed by University Affairs Board and by the student governments of COSS (UTSU, GSU, APUS).

COSS Powers and Duties

- To review in detail the **annual operating plans**, including **budgets**, and the levels of identified subsidies from the revenues derived from the Student Services Fees for other student services, and any supplementary spending plans for any unexpected revenue from the Student Services Fees, and to offer its advice to the Governing Council on these plans
- To receive information on the above services in order to consider current issues in the services and among the services, and to serve as a mechanism of information, communication and co-operation between the student services and students

<http://uoft.me/COSS>

2016/17 Proposed Fees

	Campus	Student Fee 2015/16	% Net Change	\$ Net Change	Proposed Fee 2016/17
St. George FT	Student Life	\$145.29	2.13%	\$ 3.09	\$148.38
	Hart House	\$ 82.64	1.97%	\$ 1.63	\$ 84.27
	Athletics	\$172.25	6.54%	\$11.27	\$183.52
St. George FT Total					\$416.17
St. George PT	Student Life	\$ 29.06	2.13%	\$ 0.62	\$ 29.68
	Hart House	\$ 16.54	1.97%	\$ 0.33	\$ 16.87
	Athletics	\$ 34.45	6.54%	\$ 2.25	\$ 36.70
St. George PT Total					\$ 83.25
UTM & UTSC FT	Student Life	0	0	0	0
	Hart House	\$ 2.54	1.97%	\$ 0.05	\$ 2.59
	Athletics	\$ 19.98	6.54%	\$ 1.31	\$21.29
UTM/UTSC FT Total					\$23.88
UTM & UTSC PT	Student Life	0	0	0	0
	Hart House	\$ 0.51	1.97%	\$ 0.01	\$ 0.52
	Athletics	\$ 4.00	6.54%	\$ 0.26	\$ 4.26
UTM/UTSC PT Total					\$4.78